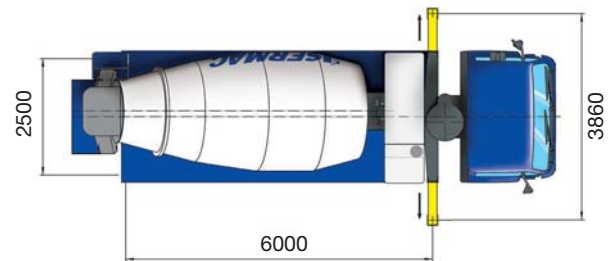
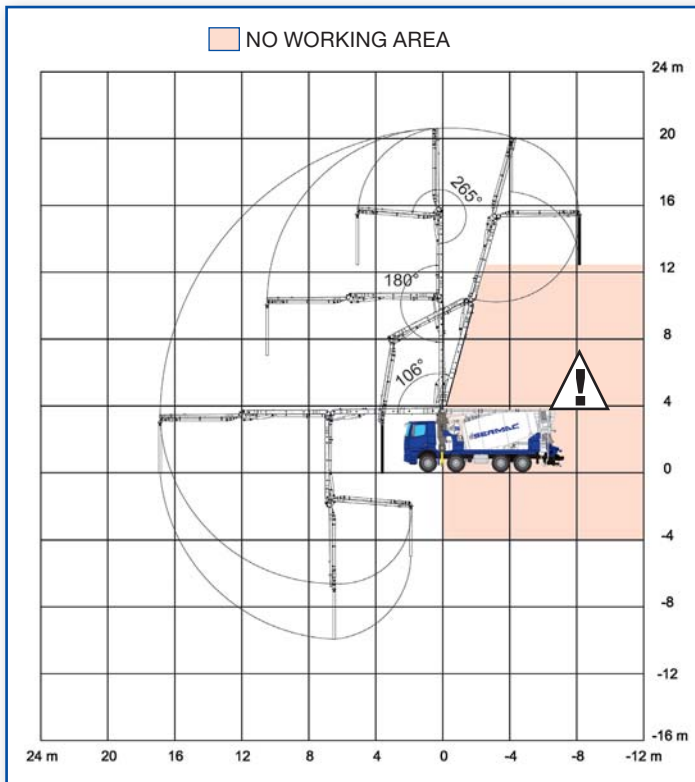




ADVANTAGES

- Mixer pump made, assembled and tested in SERMAC.
- Precise assembly on standard 3 or 4 axles chassis.
- Frame pump designed for high torsion rigidity.
- Main Italian and German components.
- High precision and great flexibility of boom 3Z21.
- Optimal weights distribution between boom and drum.
- Drum with high load capacity, made with 4 bands to reduce the wears, with elliptical bottom in steel and cone to reinforce the attack flange reducer.
- Placement fast, easy and in tight spaces.



*Dimensions vary according to the truck assembly

MIXER

NOMINAL CAPACITY	8 m ³
GEOMETRICAL DRUM VOLUME	12,5 m ³
NUMBER OF RPM	0-16
ROLLING ROOLS	2
WATER TANK CAPACITY	500 l
OIL TANK CAPACITY	430 l

PUMPING UNIT

MODEL	BS6C07-73-54	BG7C08-80-80
TH. CONCRETE OUTPUT (MAX)* ROD SIDE	73 m ³ /h (95 yd ³ /h)	80 m ³ /h (105 yd ³ /h)
CONCRETE PRESSURE (MAX)* ROD SIDE	54 bar 882 (psi)	80 bar 1160 (psi)
CONCRETE CYLINDERS (Ø X STROKE)	180x1000 mm	200x1000 mm
S-VALVE DIMENSION	6"	7"
CYCLES PER MINUTE	48 /min	42 /min
CONCRETE HOPPER CAPACITY	450 l	400 l
OUTPUT OPENING	125 mm	148 mm

*Cannot be reached simultaneously

PLACING BOOM

MAX. VERTICAL REACH	20,9 m (68'8")
MAX. HORIZONTAL REACH	16,9 m (65'7")
MAX. DOWNWARD REACH	-9,94 m (44'11")
SECTION NUMBER	3
MIN. UNFOLDING HEIGHT	5,4 m (22'7")
FLEXIBLE TERMINAL HOSE	Standard
ROTATING ANGLE	370°
SECTION OPENING ANGLES	106° - 180° - 270°
OPENING SYSTEM	"Multi Z"
FRONT OUTRIGGERS	Horizontal
REAR OUTRIGGERS	-
FRONT OPENING	3.86 m (12'9")
REAR OPENING	2.50 m (7'2")